

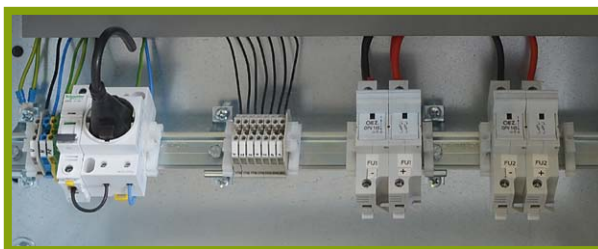


- Space for five 12V batteries, up to 75Ah
- Power supply via 1 N PE 230VAC
- Input circuit breaker protection and output fuse disconnectors
- Under-voltage, over-voltage, power outage and malfunction alerts

### Technical parameters:

- Built-in to a RITTAL server cabinet type AE8684500 colour RAL 7035
- Output current range of charger 0 to 15A
- Dimensions:  
width – 600mm  
height – 1800mm  
depth – 400mm  
Cable outlet socket – 100mm

- 2 ventilation grids and a lock for the cabinet doors
- Units and terminals mounted just above floor level onto an inclined TS35 rail
- 2 shelves for battery placement
- Mounting panels containing the AXIstand charger 60-15.A31
- Charger cables led through Adaptaflex PA conduits to the base of the case
- The flexible cord is connected to a 1f 230V plug with a 10A circuit breaker
- Output signal relays guided via a HYSLY-OZ 7x1.0 cable to the transmission terminal



**Different voltage, power, backup time, etc. charger variables are available.**